

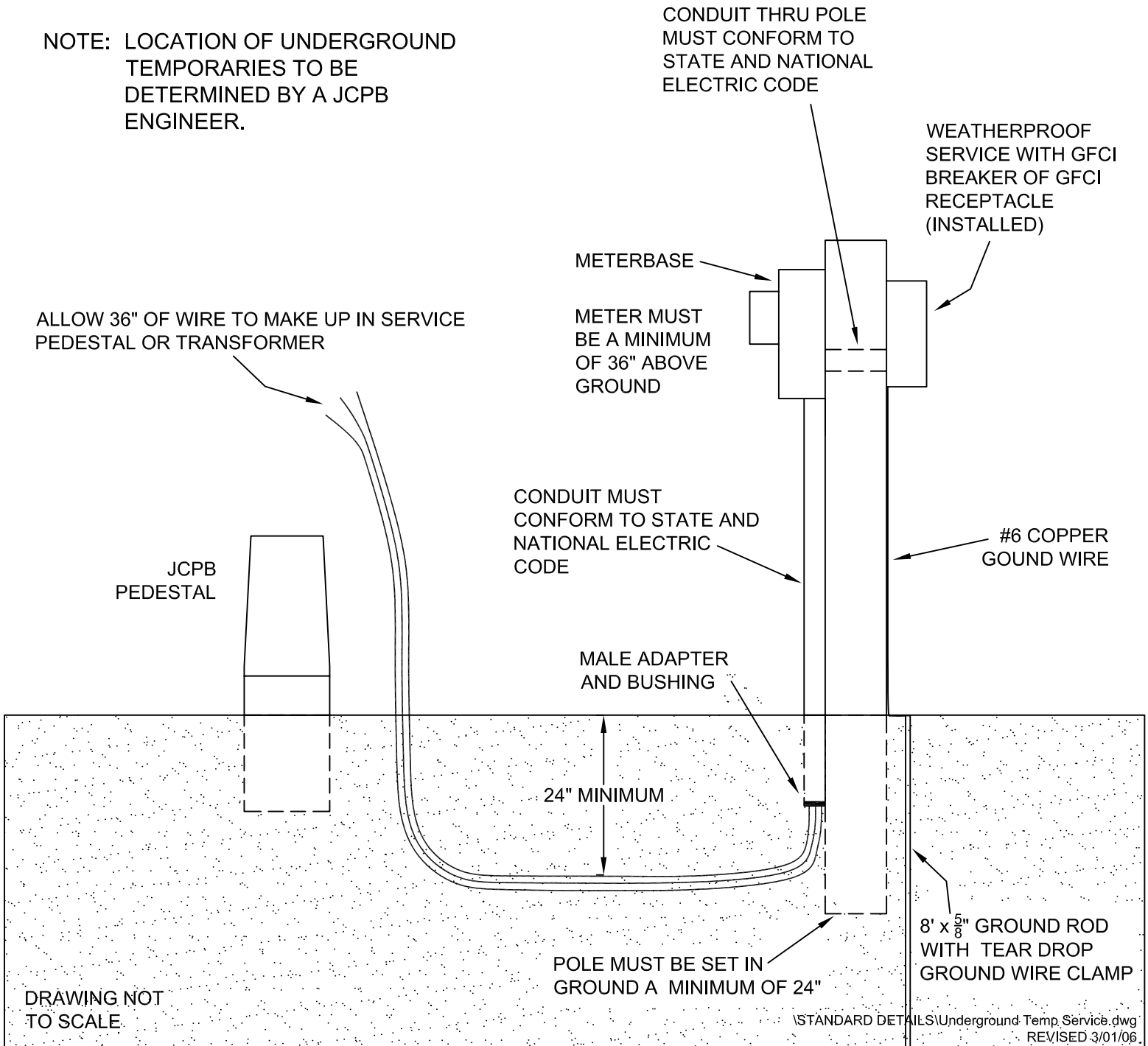
JOHNSON CITY POWER BOARD

UNDERGROUND TEMPORARY SERVICE REQUIREMENTS



NOTICE: WHEN JCPB CREWS ARE REQUIRED TO MAKE MORE THAN ONE TRIP TO CONNECT A TEMPORARY SERVICE DUE TO WIRING, POLE, ETC. NOT BEING SATISFACTORY, AN ADDITIONAL CHARGE OF \$50.00 PER TRIP SHALL BE MADE.

NOTE: LOCATION OF UNDERGROUND TEMPORARIES TO BE DETERMINED BY A JCPB ENGINEER.



DRAWING NOT TO SCALE.